



# Stay safe around power lines

## Keep your distance!

### Mobile plant

If you are unsure of the voltage of an overhead transmission line, we recommend that you keep any machines and load **AT LEAST 6 METRES CLEAR.**



### Vegetation

Trees and other vegetation must be kept **AT LEAST 5 METRES CLEAR** of overhead transmission lines at all times.



### If power lines are down

Call us immediately on **0800 THE GRID.** Make sure people are kept well away.



If power lines hit your vehicle while you are in it, stay still until help arrives. If in an extreme emergency you do have to get out, don't touch any metal and the ground at the same time – jump as far as you can.

If you have any questions or concerns, please call us on 0508 LANDOWNER, or call your landowner liaison officer:

<b>North Auckland/ Northland</b> Ox Wightman 029 771 1825	<b>South Auckland/North Waikato</b> Howard Warren 021 546 628	<b>South Waikato</b> Les McKenzie 021 945 284	<b>Bay of Plenty</b> Carey Sutton 027 600 5377
<b>Taranaki and Central North Island</b> Andy Ward 021 357 935	<b>Lower North Island/ Hawkes Bay</b> Stephen Howard 027 490 9464	<b>Nelson Marlborough</b> Isaac Hurst 027 535 5255	<b>West Coast</b> Glenn Foster 021 424 935
<b>North Canterbury</b> Ron Mackenzie 027 435 6240	<b>South/Mid Canterbury</b> Myles Stichman 027 477 9693	<b>Otago Southland</b> Jimmy Cormack 021 357 996	

August 2015

# LOOK UP

at least 6 metres clear of equipment,

# INFORMATION SHEET

Keeping the energy flowing

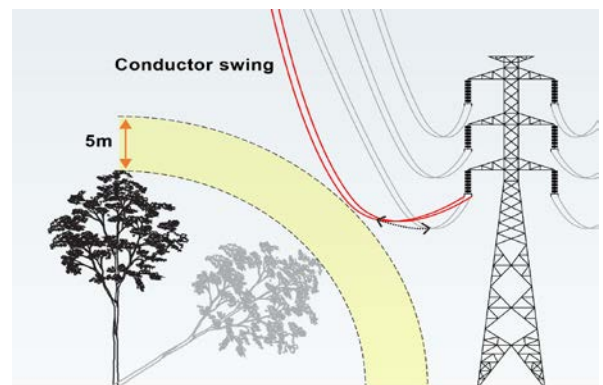
## Mobile plant:

- **The minimum approach distances to overhead transmission lines differ depending on voltage and load.\*** If you don't know the voltage we recommend you keep 6 metres away. Talk to your landowner liaison officer for advice on your specific situation.
- **Always think about where power lines are** when moving vehicles, especially tall machinery and those with booms or elevated platforms. Measure machinery to establish the maximum height.
- **Power lines can swing or sag** because of wind or temperature changes (so they may not always be in the same place or at the same height).
- When **crossing underneath with equipment**, choose a route where power lines are high enough to give the minimum required clearance, and always have lifting equipment lowered before moving it near lines.
- **Place warning signs** in plain sight of mobile plant operating controls. Ask us for stickers to put on your mobile plant and signs for fences and gates.
- **Centre pivot irrigators are also mobile plant** – make sure their booms keep 6 metres away from transmission lines too, and take care with their assembly and disassembly.



## Vegetation:

- Trees growing close to transmission lines may touch the lines or **electricity may 'jump' the gap** potentially causing:
  - injury or death to someone near the tree
  - damage to land and property.
- If training vines or similar, **do not install wire along the same path** as overhead power lines.
- **Do not strain wires** where they could contact lines (a snapped wire flicking upwards could come into contact with nearby lines).
- **Long spans** (over 150 m between towers) require a much greater distance between trees and conductors – check with your local Transpower landowner liaison officer or call Transpower on 0508 LANDOWNER.



\*Approach distances to power lines are explained in the New Zealand Electrical Code of Practice 34:2001 (NZECP:34). You can download a copy from our website - [www.transpower.co.nz](http://www.transpower.co.nz).